



# Ohio Star Variation Block



NINA MCVEIGH

SEPTEMBER 4, 2017

This month's block in the BERNINA Block of the Month Series is the Ohio Star Variation Block! For Block 6, this month we will be making four 12" Ohio Star variation blocks and seaming them together to form a large 24" block. I love this traditional block and all its variations!



If you are buying fabric for each block on a monthly basis, you will need three fabrics for this block; an orange, a pink and the gray background fabric. If you would like the center of the block to be a different fabric, such as a silk dupioni to add texture, you will need a pink piece 6" X 20".



Please see more details about fabric requirements [here](#). You will follow the Alternate Cutting Instructions below if you are cutting from a kit.

Please also download the [BERNINA Block Party Fabric Chart](#).

If you are using the Sun Print 2017 Andover fabric line by [Alison Glass](#), the specific colors are listed in bold:

## Fabrics

Fabric A    Orange **A-8482-O**    Fat Quarter



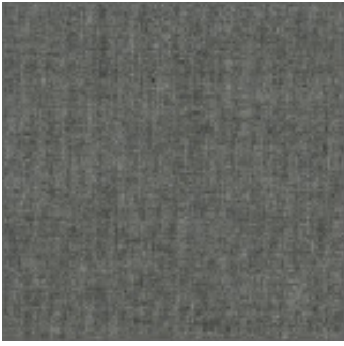
Fabric B    Pink    **A-8482-E**    Fat Quarter



**Optional:** If you want a contrast fabric such as a silk for the four center squares, you will need a second pink, cut 6" X 20". This is totally optional.



Fabric C    Black    **A-C-Black**    1/2 yard



## Supplies

Patchwork Foot [#37/37D](#) or [#57/57D](#) or [#97/97D](#)

[Leather Roller Foot #55](#)

[Walking Foot #50](#) or Edgestitch Foot [#10D](#) for machines with Dual Feed

[Adjustable Ruler Foot #72](#) if using domestic machines

[Ruler Foot #96](#) if using the Q 20 Sit-Down Machine or the Q 24 Longarm Machine  
(**Note:** you will also need the [Rulerwork Kit for Frame](#) if using either the Q 24 or Q 20 Longarm Machines on a frame)

BERNINA Straight Quilting Ruler

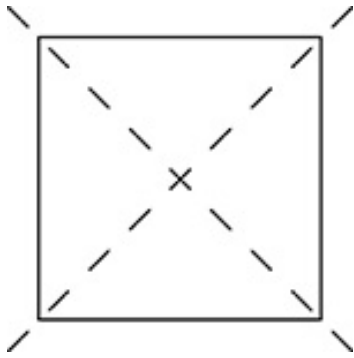
- Included in [BERNINA Ruler Kit for Sit Down Machines](#) (Domestic Machines and B 20 Sit-down Model) includes Mini Straight Line Tool, Squiggle Template, Nested Mini Ovals, Nested Mini Circles, Mini 4-in-1)
- Included in the [BERNINA Ruler Work Kit for Frame](#)



## Cutting Instructions

### Fabric A:

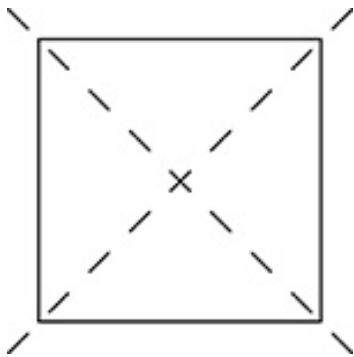
Cut 6 squares 5 1/4"; cut each square into quarters diagonally making a total of 24 triangles.

**Fabric B:**

Cut \*8 squares 4 1/2".

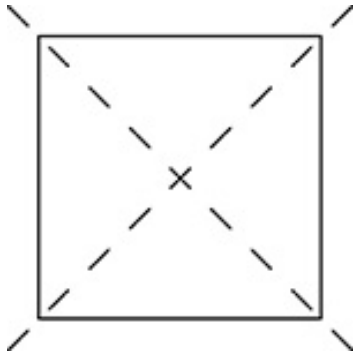
Cut 2 squares 5 1/4"; cut each square into quarters diagonally making a total of 8 triangles.

\*If using a contrast fabric for the four center squares, cut 4 squares from fabric B and 4 squares from the contrast pink fabric.

**Fabric C:**

Cut 12 squares 4 1/2".

Cut 8 Squares 5 1/4"; cut each square into quarters diagonally making a total of 32 triangles.



## Alternate Cutting Instructions if Cutting from Kit

Fabric A:

Cut a 5 1/4" strip; cut into 6 squares 5 1/4". 11" of the length will remain.

Fabric B:

Cut a 5 3/4" strip; cut 2 squares 5 1/4" 32" remain of this wider 5 3/4" strip for later use.

Cut a 4 1/2" strip from Fabric B; cut 8 squares 4 1/2" (NOTE: if you are using the contrast fabric, cut only 4 squares 4 1/2" of Fabric B, and cut an additional 4 squares 4 1/2" of the contrast fabric.)

Fabric C:

Cut two 4 1/2" strips; cut 12 squares 4 1/2". 29" of this length will remain.



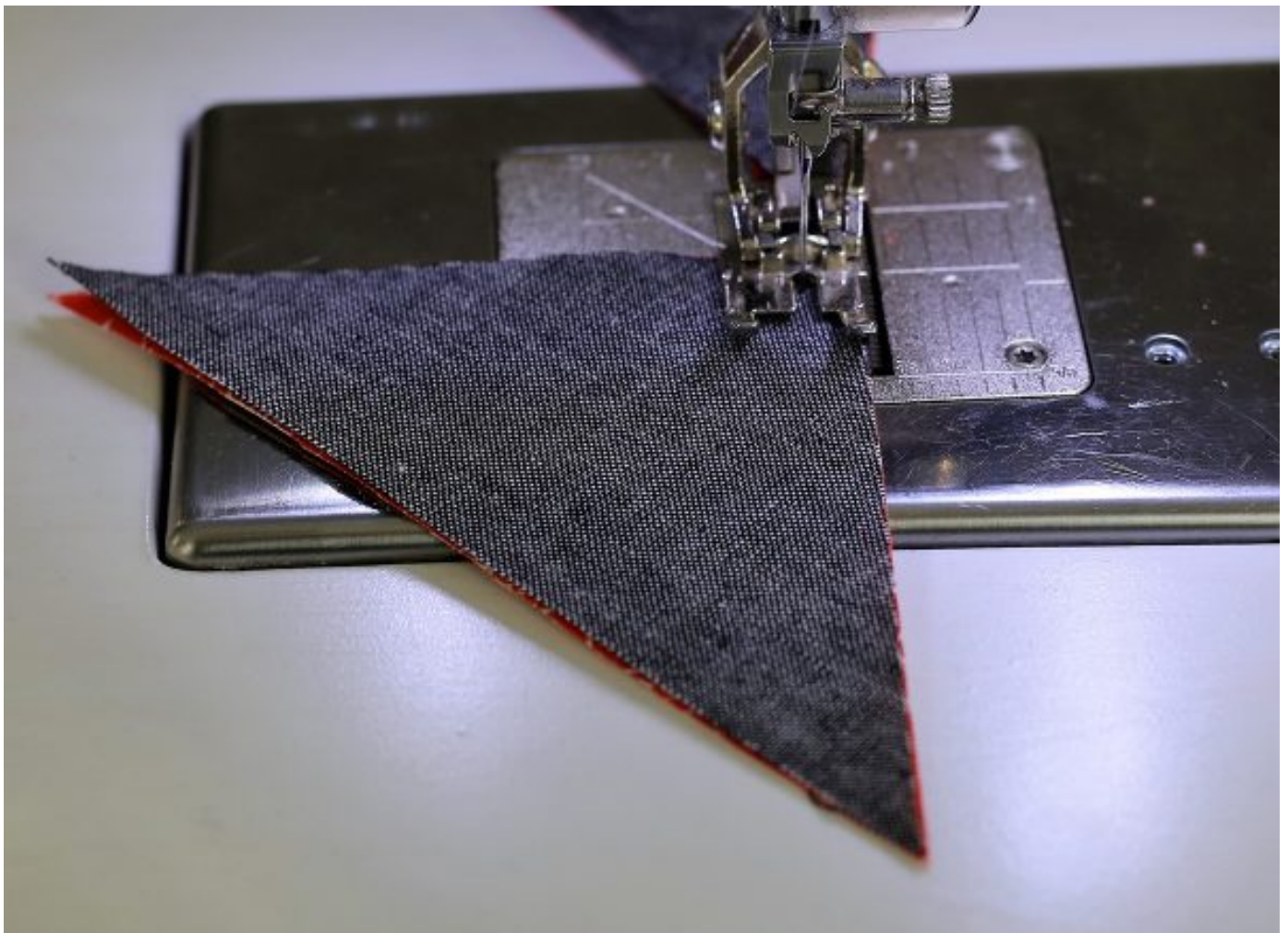
Cut a 5 1/4" strip; cut 8 squares 5 1/4".

## Piecing

Four Ohio Star blocks make up this one-block unit. Each of the four blocks is a 12 1/2" square.

Stitch together the Fabric A triangles to the Fabric C triangles. Begin sewing on the straight edge, not the point of the triangle. Make 24 units.

Stitch together the Fabric B triangles to the Fabric C triangles. Begin sewing on the straight edge, not the point of the triangle. Make 8 units.



Seam the triangle sections together as shown below to create 4 1/2" squares. You will then have 24 orange and gray squares, and 8 orange, pink and gray squares.



Seam 2 gray background squares to each side of 4 orange and gray square units. You will have 4 of these units.



Seam an orange and gray square unit to a pink square; then seam the pink square to an orange, pink and gray square unit. Pay attention to the orientation of the pink and orange triangles. You will then have 4 of these units.



Seam a gray square to an orange, pink and gray square unit and then this unit to a pink square. Note: the pink square would be from the contrast pink fabric if you chose to use the contrast fabric.

You will now have 4 of these units.



Seam these 3 strips together to form a block. Repeat for 4 blocks.



Seam the four blocks together with the pink corner square facing the center of the large 24 ½" square.



If you are going to make the entire quilt from the [Block of the Month Series](#), set this large block aside for now. The instructions for the piecing together all the blocks will come at the end of the series.

Each month, I also give you instructions for a different quilting technique so that you can experiment with different techniques. When it comes time for the final quilting, you will be ready to decide which quilting techniques you like best.